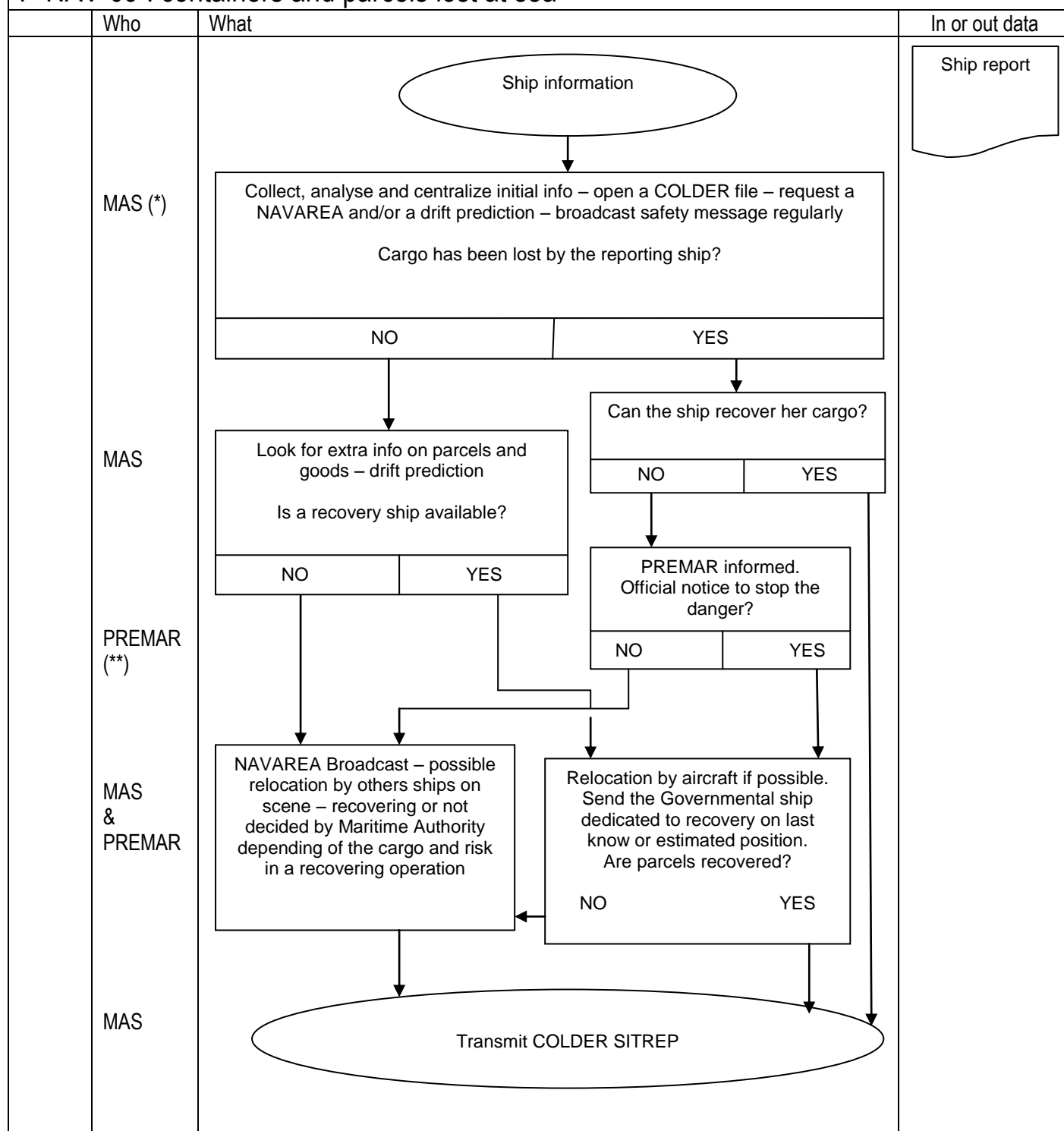


P-NAV-09 : containers and parcels lost at sea



(*)T2000 data base is the French data base of ship traffic and the entry to the European data base SafeSeaNet

(**) PREMAR is the Regional Maritime Authority – French abbreviation of “Préfet Maritime” – PREMAR is under Prime Minister Authority and coordinate the action of all ministries and administrations at sea.